

[Common, Tire care]

Several types of tire wear examples and possible causes

<https://bekomcar.com/en/tutorial/pdf/29/>

There are different types of tire wear including camber wear, feathered wear, cupped wear, center wear, shoulder wear. The typical causes are related to suspension, wheel alignment, overinflated or underinflated tires. Also watch out the cuts and punctures as well.



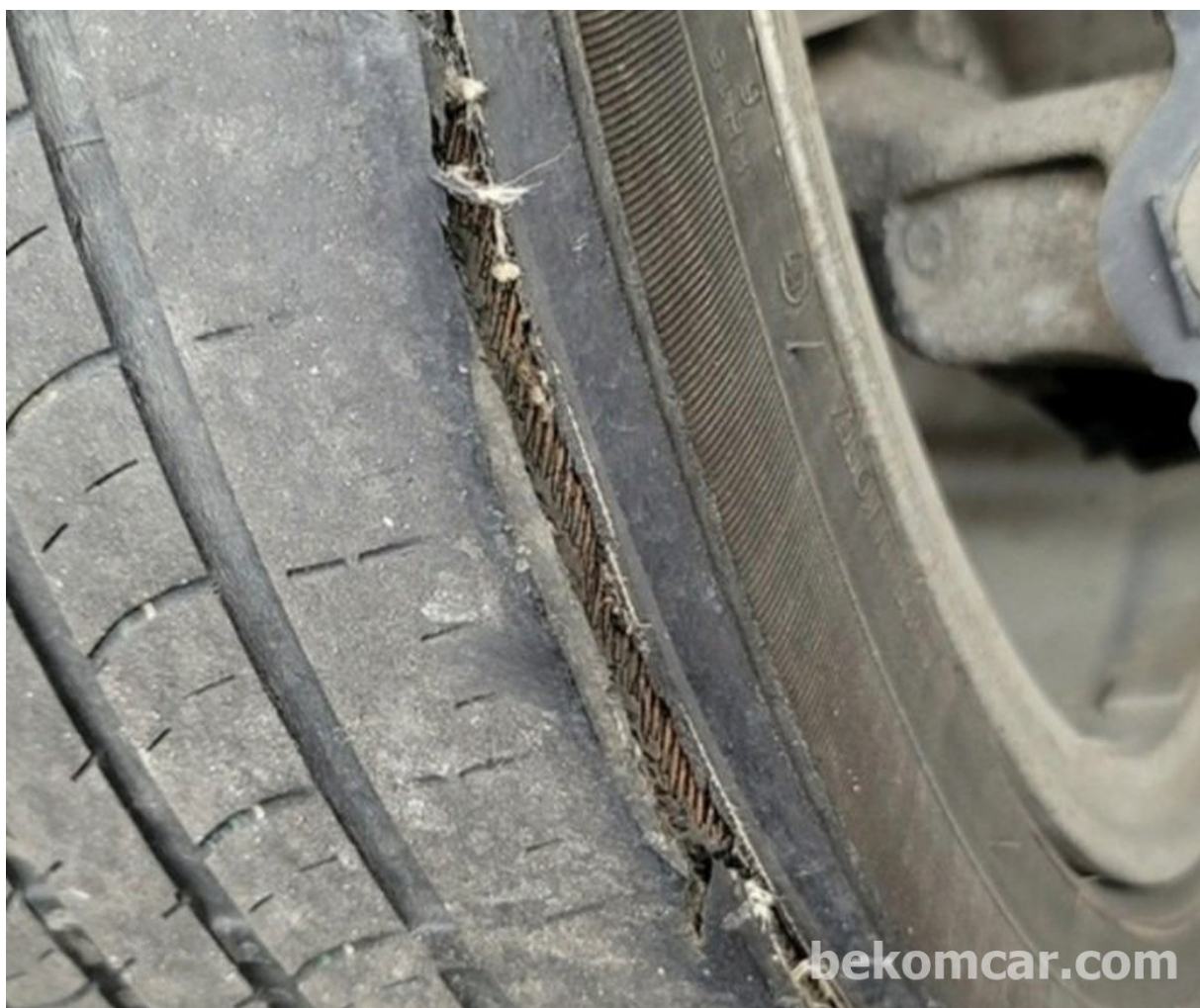
(1) Types of tire tread wear patterns







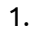
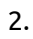
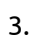




References

1. <https://www.continental-tires.com/car/tire-knowledge/tire-damage-age-repair/tire-damages>
2. <https://www.tyresnorthampton.com/news/types-of-tyre-wear-patterns-and-causes/>

Related contents & Comments

1.  Checking the tire pressure
2.  Check tire wear & depth
3.  How to check tire production date code

중고차 구입전에 타이어 마모형태를 보면 하체의 상태를 판단할 수 있다. .

Feb. 18, 2022, 3:48 p.m., #C383, (@sunjoo.moon)

 SunJoo Moon , Edit Date: Aug. 30, 2021, 12:25 p.m.

!Disclaimer ! All cars are different, so please read the service manual for your vehicle before any repair work. bekomcar assumes no liability for property damage and/or injury incurred directly and/or indirectly as a result of any of the information contained in the website. Use this information at your own risk.